

Ride2Rail pilot in Helsinki testbed

Jari Honkonen
Forum Virium Helsinki
jari.honkonen@forumvirium.fi
TW: @maxhonk
+358405014528

Photo: Lauri Rotko

FORUM
VIRIUM
HELSINKI

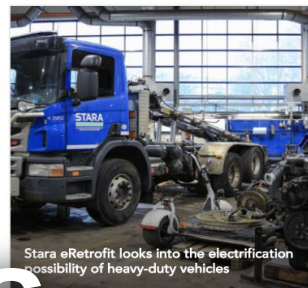
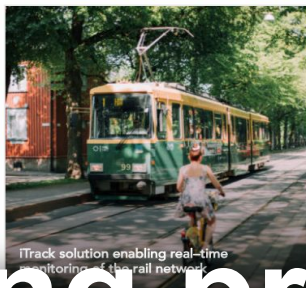
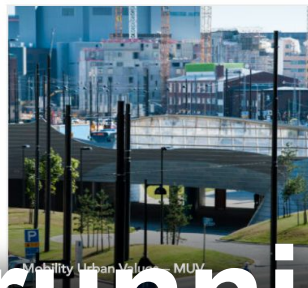
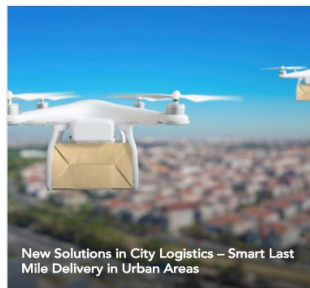
Forum Virium is an innovation company of the City of Helsinki.



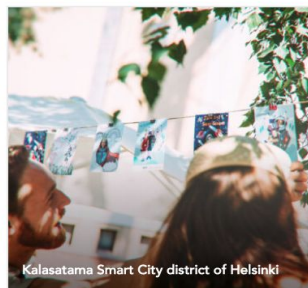
Co-creating urban futures

FORUM
VIRIUM
HELSINKI

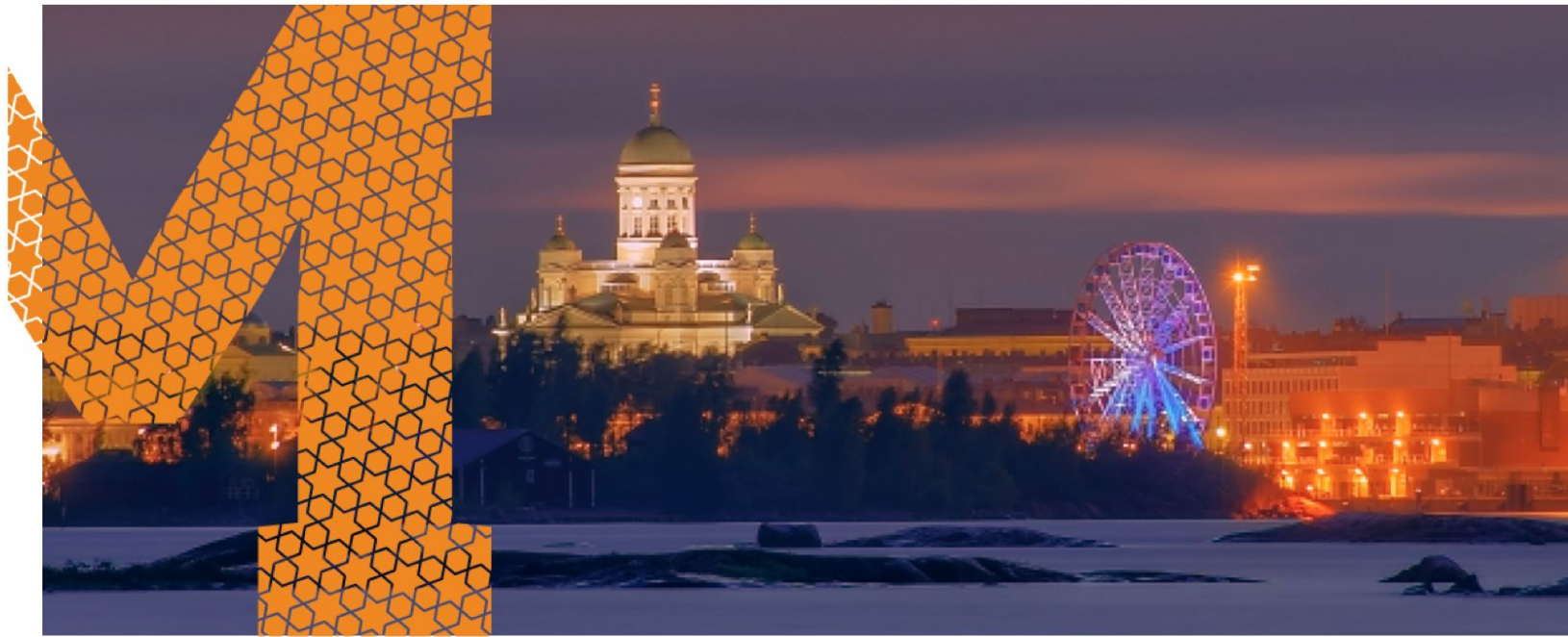




40+ running projects



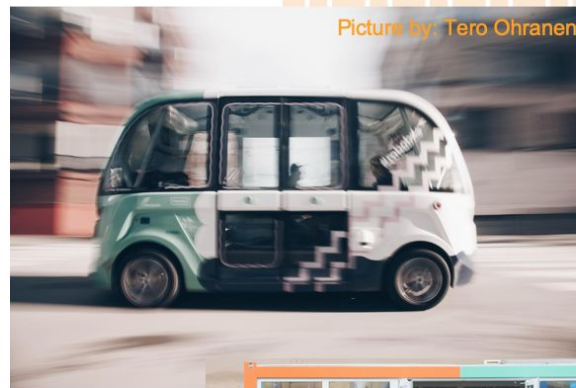
Expertise
and insight
for the future



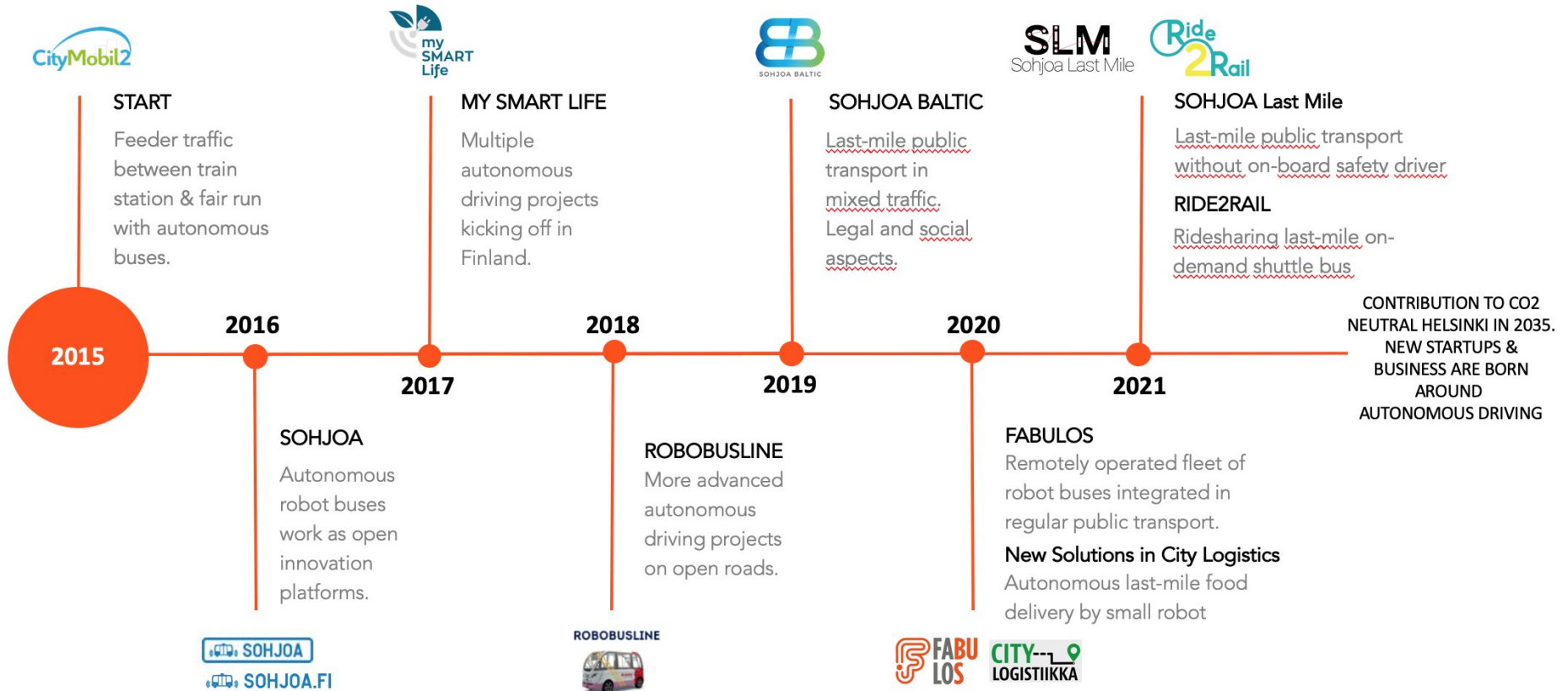
Metropolia University of Applied Sciences

Smart Mobility Innovation Hub

The Metropolia Smart Mobility Team



Expertise
and insight
for the future

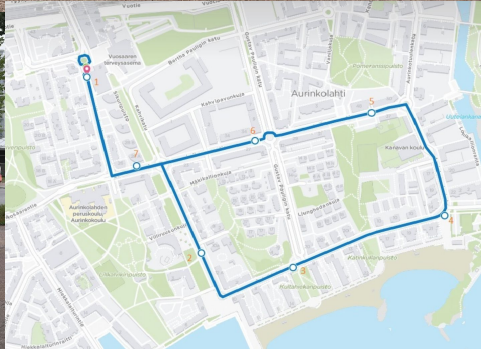


FABULOS

- <https://fabulos.eu/>
- Pilot in Helsinki, near busy Pasila train station <https://fabulos.eu/helsinki-pilot/>



Sohjoa Baltic field test, Helsinki



Line number 90R, included in HSL transport information
Route from Vuosaari metro station to a popular recreational area and Aurinkolahti beach, 2,5km.
Automated bus operated on public roads.
Navya minibus, 8 passenger
Operated by Holo
9AM-3PM weekdays
12AM-6PM weekends
3 departures/hour
June-September 2019

Kalasatama (During 2019 from May till November)

Routes integrated to Helsinki public transportation system

Km Driven

1368

Passengers

3891

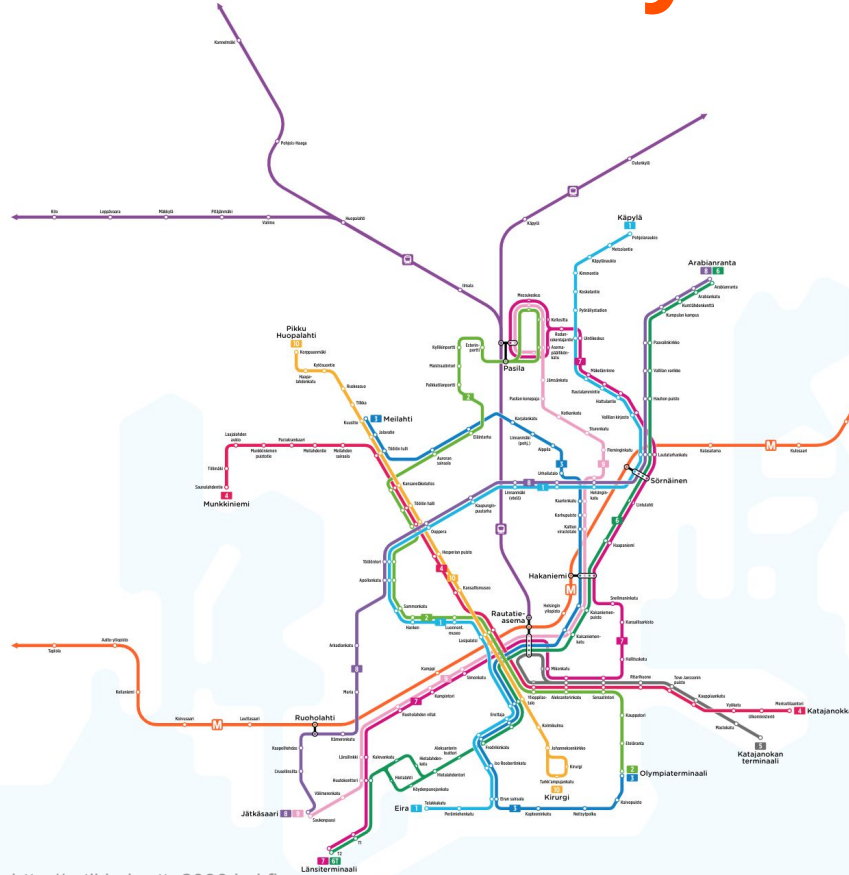
Operating days

83

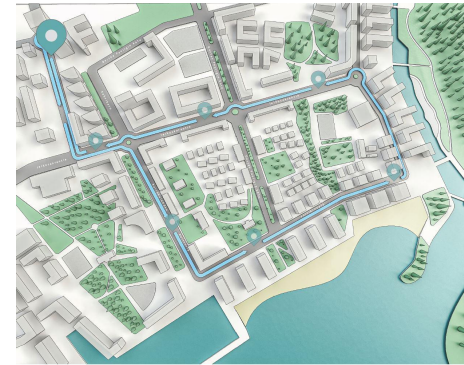
Picture by Tero Ohanen



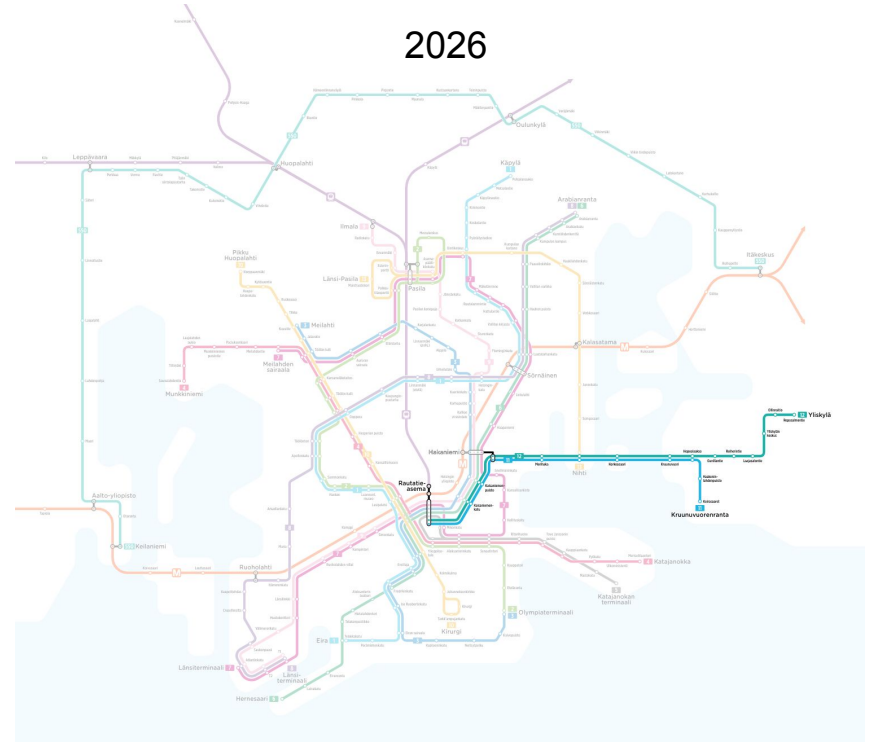
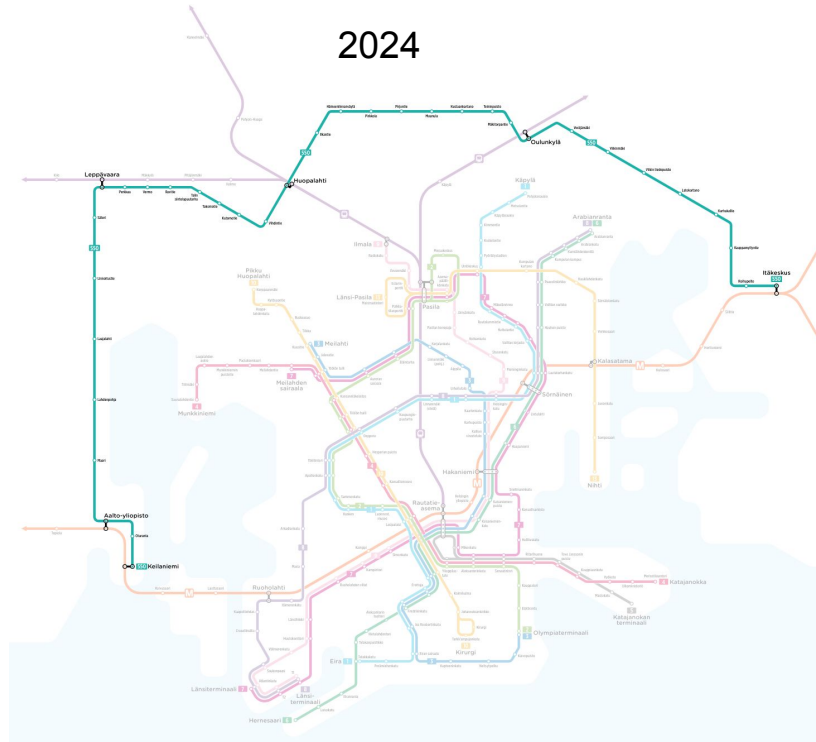
Helsinki rail system and the pilot



Planned pilot site
Vuosaari residential area
End of a metro line



Helsinki rail system expands



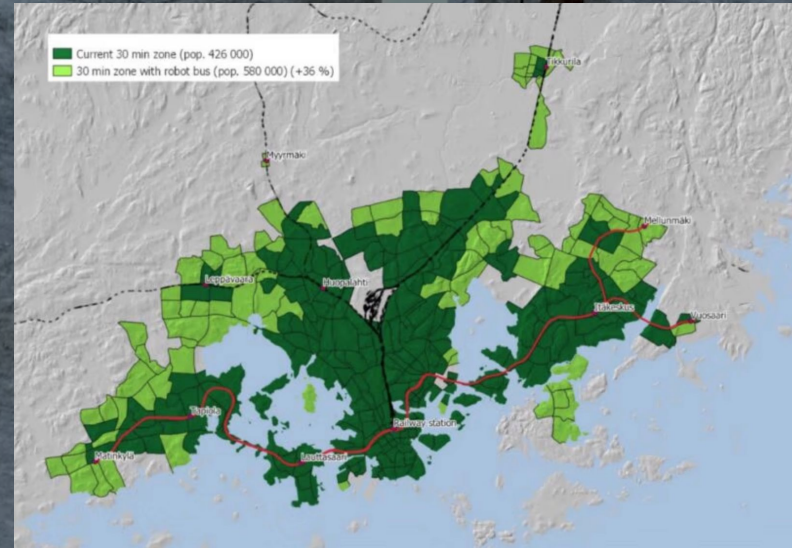
Robot bus use case

- Self-driving technology will be first implemented on public transport and logistics
- Better availability of public transport

Simulation from Sohjoa Baltic
Sohjoabaltic.eu

Automated shuttles expand the area of good public service level (light green area)

- Better user experience
- Less cars on the road
- Less congestions and emissions



Helsinki pilot benefits

- Possibility to learn how Ride2Rail solution works with the automated shuttle transport technology
- User experience insight
Living lab for development project, offers real life conceptual information for the basis of decision making
- Increases the visibility of the project

Pilot details

- **Procurement, planning in progress**
- **Estimated timetable**
 - Request for tenders out latest in April 2021
 - Route planning etc. details planning with contractor
 - Start of the pilot July-August 2021
 - Duration about 2 months

Pilot details

- **Infrastructure tweaks in cooperation with city of Helsinki and local stakeholders**
 - Storage / charging points
 - Traffic arrangements like stops, speed limits etc.
- **Passenger information in local journey planner**
(Helsinki Region Transport authority, HSL)
- **Engagement to R2R development, discussions later this month**

Cross demo KPIs	Athens	Brno	Helsinki	Padua
KPI#1 Number of RIDE2RAIL app users	50	200	50	50
KPI#2 Number of completed RIDE2RAIL app trips	2000	4000	400	4500
KPI#3 Number of completed multi-occupancy vehicle trips with R2R app	10	800	200	315
KPI#4 Number of completed trips involving public transit/rail with R2R app	0	100	200	4050
KPI#5 Number of completed commuter trips with R2R app	750	40	240	4050
KPI#6 Number of completed rural trips with R2R app	2000	4000	0	3150

Helsinki local KPI	Target
KPI#3 Number of walk-in trips with the Robobus	200

FORUM VIRIUM HELSINKI